

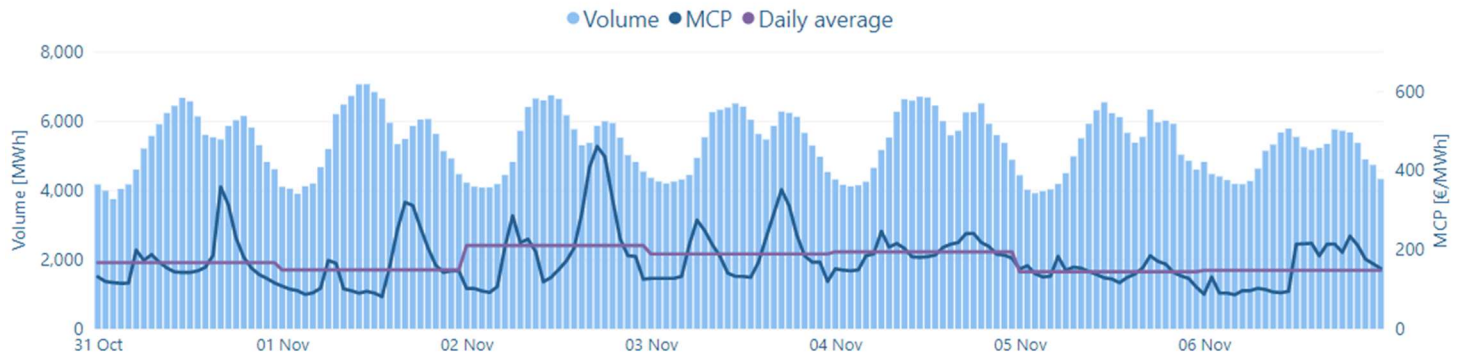
**MCP**  
**171.25** €/MWh

**St. Deviation**  
**67.79**

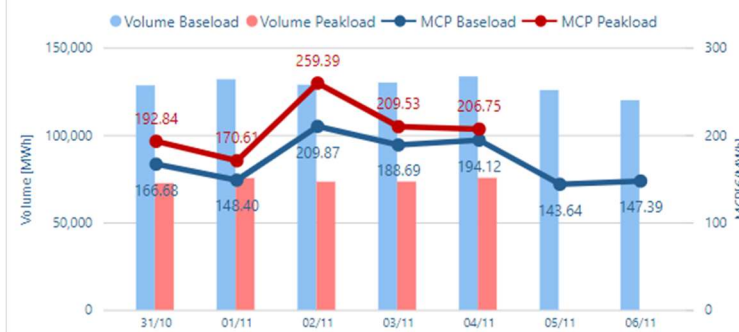
**Volume**  
**898** GWh

**Value**  
**156.6** M€

## Hourly MCP & Volume



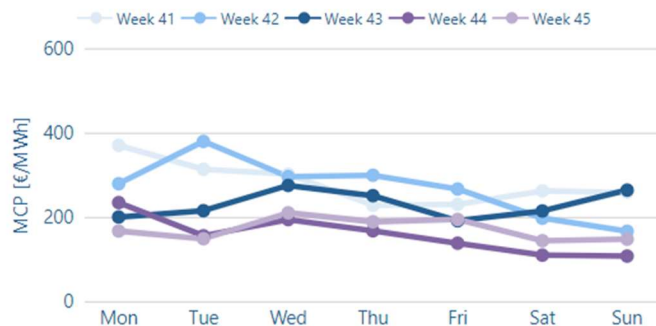
## Daily MCP & Volume



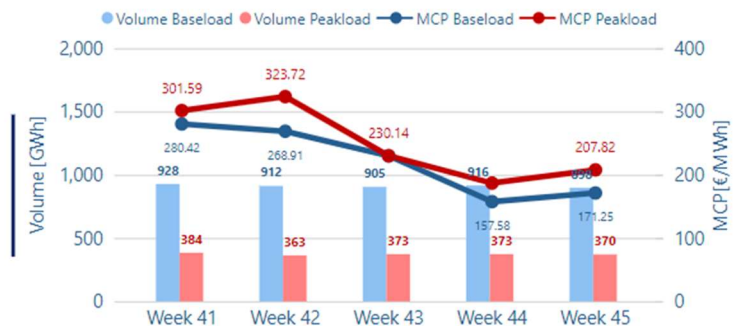
## Data table

Delivery Date	MCP BL [€/MWh]	MCP PL [€/MWh]	Volume BL [MWh]	Volume PL [MWh]
31/10	166.68	192.84	128,406	72,471
01/11	148.40	170.61	131,903	75,422
02/11	209.87	259.39	128,770	73,317
03/11	188.69	209.53	130,042	73,402
04/11	194.12	206.75	133,503	75,520
05/11	143.64		125,714	
06/11	147.39		119,935	

## MCP per Weekday



## Weekly MCP & Volume



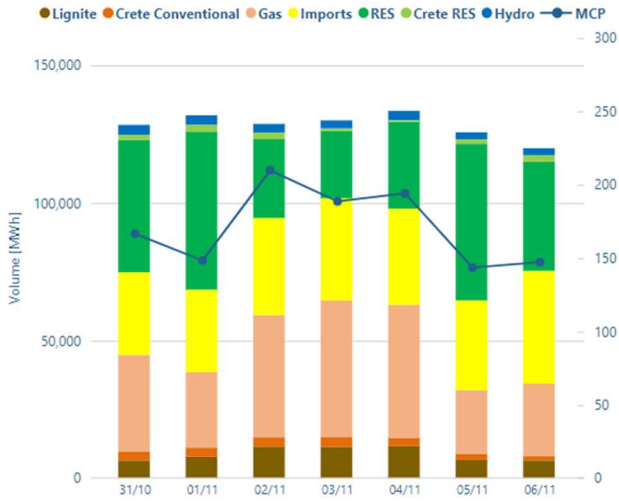
Day Ahead Electricity Market-Greek Bidding Zone

Week 45

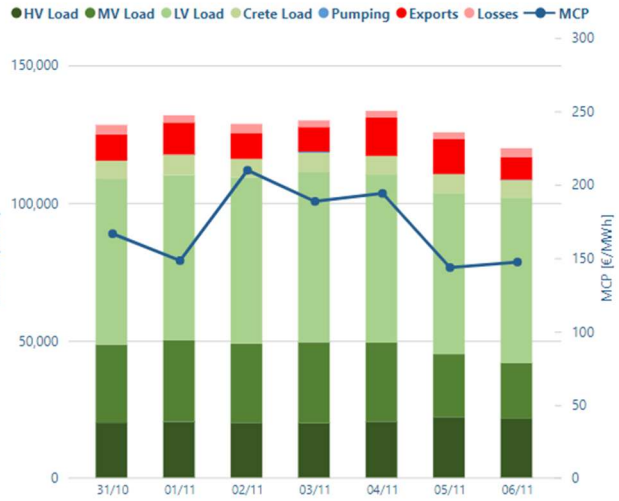
31/10/2022

06/11/2022

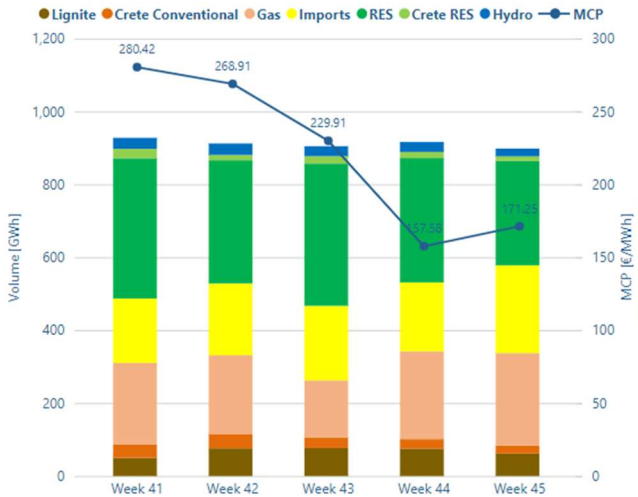
## Daily Supply Mix



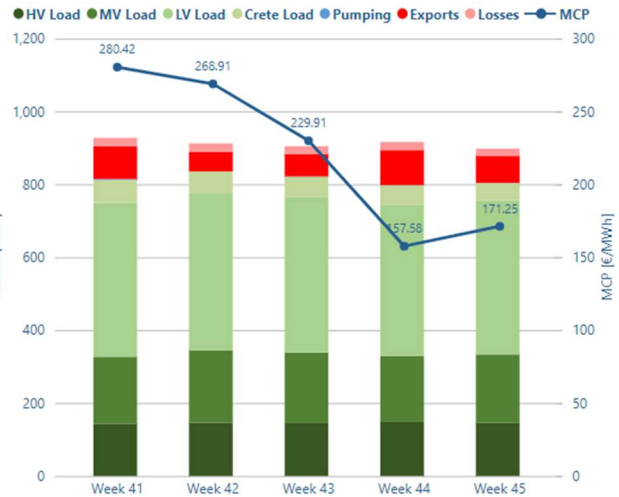
## Daily Demand Mix



## Weekly Supply Mix



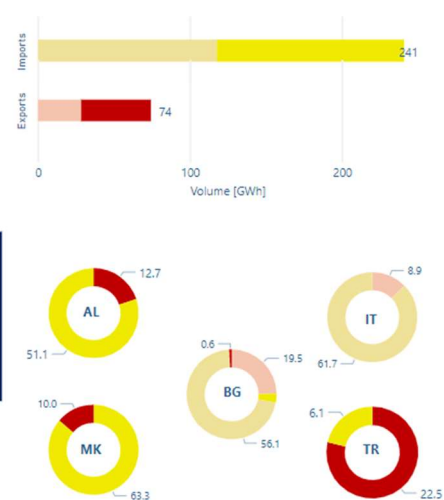
## Weekly Demand Mix



## Unmatched orders & traded volume



## Cross Borders Volumes

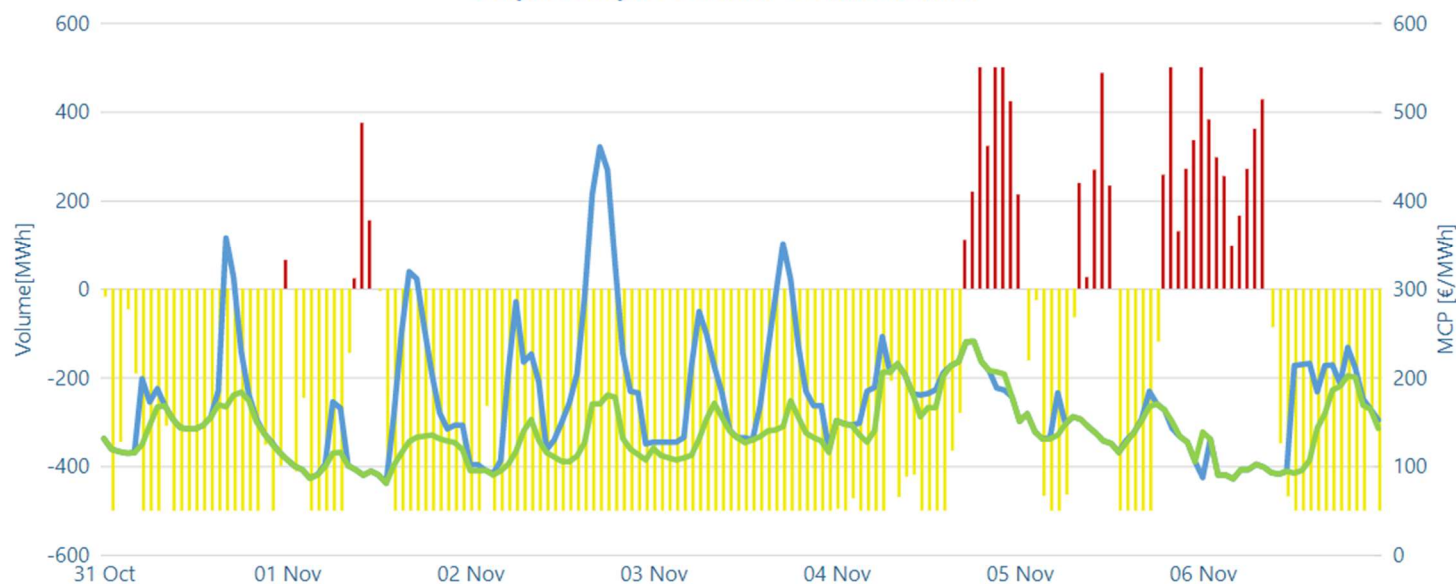


\*The unmatched orders include all orders that have not been included in the algorithm (excluding block orders for sell side)

Exports-Implicit Allocation Imports-Implicit Allocation

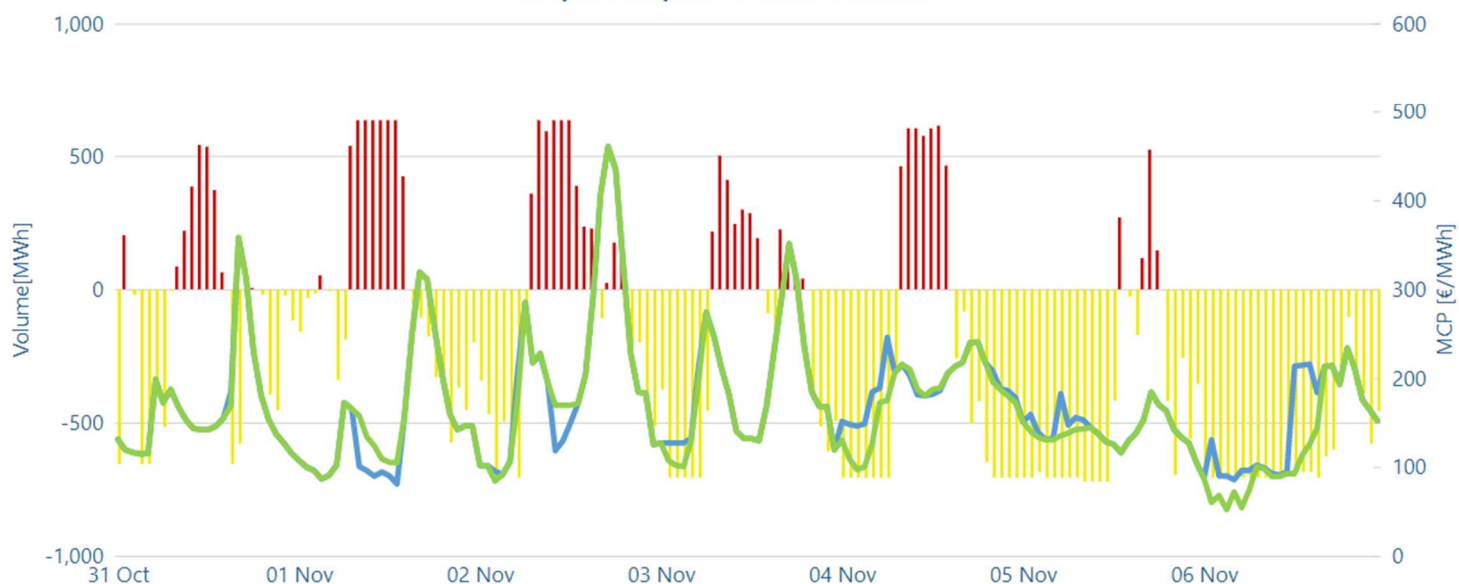
## Market Coupling Cross Border Flow

● Export ● Import ● GR MCP ● IT (SUD BZ) MCP\*



\*Datasource for IT (SUD BZ) MCP: <http://www.mercatoelettrico.org/En/Esiti/MGP/EsitiMGP.aspx>

● Export ● Import ● GR MCP ● BG MCP\*



\*Datasource for BG MCP: <https://ibex.bg/markets/dam/dam-market-segment/>

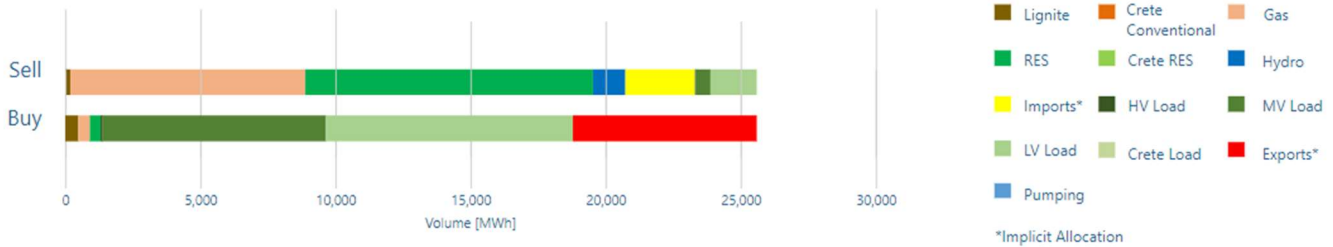
Intraday Electricity Market-Greek Bidding Zone

Week 45

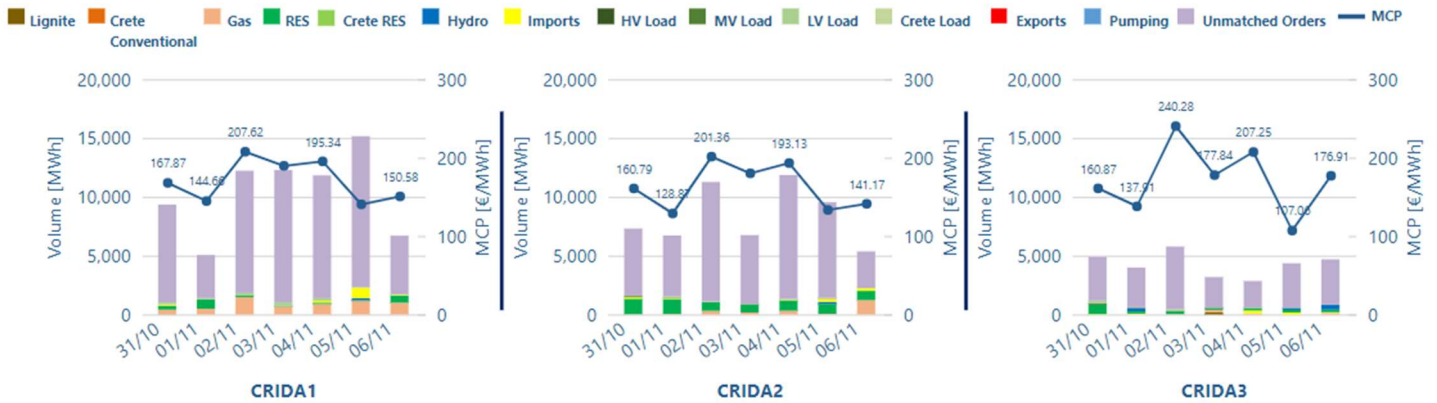
31/10/2022

06/11/2022

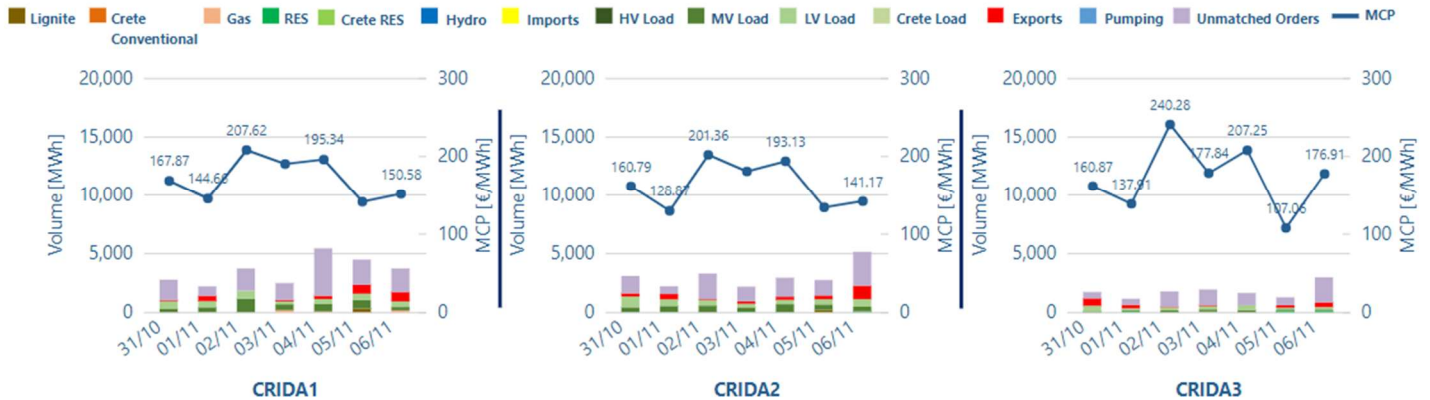
## Aggregated traded volume



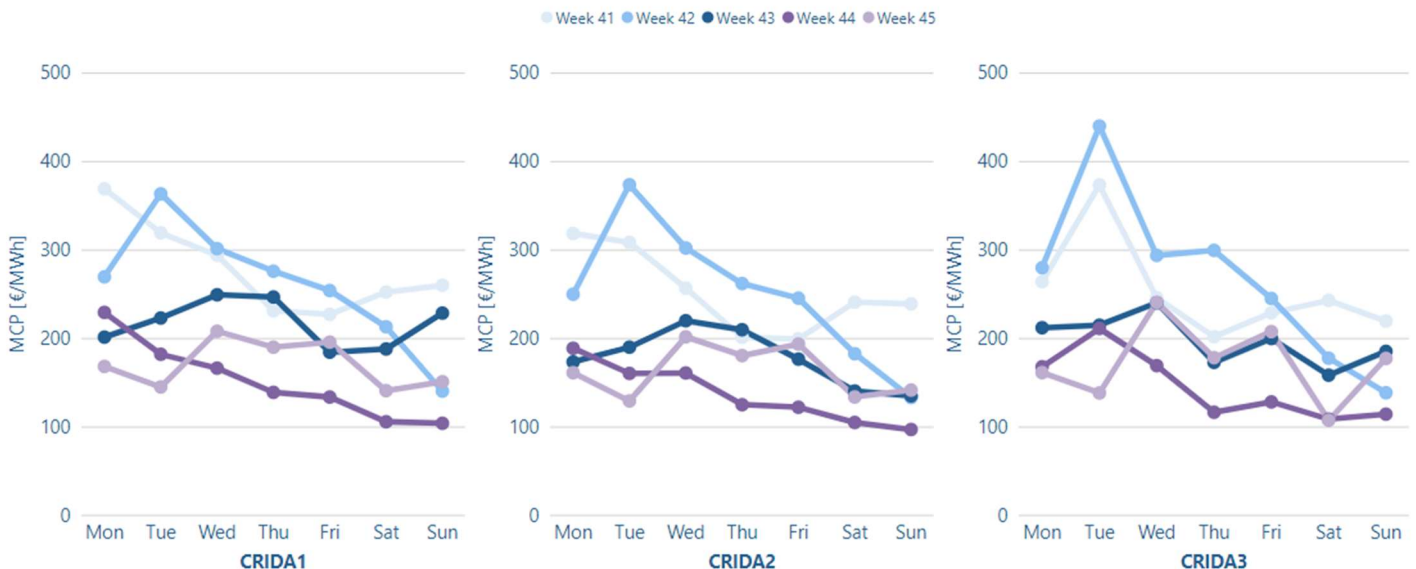
## MCP, Volume & unmatched orders for Sell Side



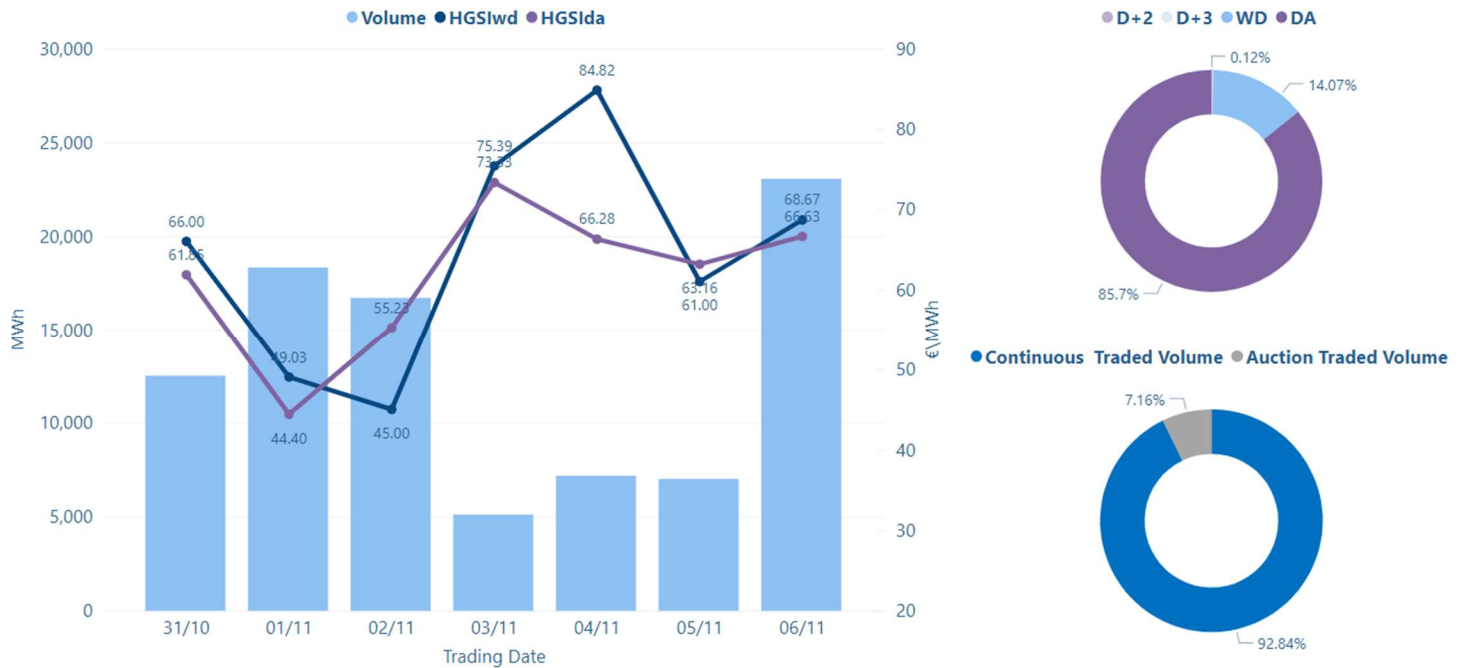
## MCP, Volume & unmatched orders for Buy Side



## MCP per Weekday







## Volume, Closing, Min & Max Prices per Trading Date

